



Direct Dial/Ext:  
e-mail:  
Ask for:  
Date:

Dear Member

**KENT COMMUNITY SAFETY PARTNERSHIP - WEDNESDAY, 19 JULY 2017**

Please find presentation given to the Partnership on Wednesday 19 July in relation to the PREVENT and Counter Terrorism Update.

**Agenda Item No**

D2 **PREVENT and Counter Terrorism Update (Pages 3 - 30)**

Yours sincerely

A handwritten signature in black ink, appearing to read 'John Lynch', is written over a faint, light-colored signature line.

**John Lynch**  
**Head of Democratic Services**

This page is intentionally left blank

**Community Safety Partnership Briefing – 19<sup>th</sup> July 2017**

# **Kent County Council Resilience and Emergency Planning**

**Fiona Gaffney – Head of Resilience and Emergency  
Planning**

# Major Incidents and Disasters



Bus With U.S. Tourists Plunges Off English Highway; 10 Killed, 30 Hurt  
 November 11, 1993  
 From Associated Press



1939-45  
 1953  
 1968  
 1987  
 1989  
 1993  
 1994  
 1998  
 2000  
 2006  
 2007  
 2008  
 2009  
 2010  
 2011  
 2012  
 2013  
 2014  
 2015  
 2016  
 2017

## Major Incidents and Disasters Affecting Kent

Page 4



# Civil Contingencies Act 2004

## Civil Contingencies Act 2004 - KCC's Duties Under the Act

**KCC along with other Local Authorities is a 'Category 1 Responder' within meaning of the Act – equal to Kent Police, Kent Fire and Rescue Service, South East Coast Ambulance Service and NHS England.**

- Risk Assessment
- Emergency Planning
- Business Continuity Management (BCM)
- Warning – Informing and Alerting the Public
- Information Sharing
- Co-operation
- **Business Continuity Management Promotion**

# Definition of Emergency

## What is a Major Emergency?

Emergency is defined in Part 1 of Civil Contingencies Act as:

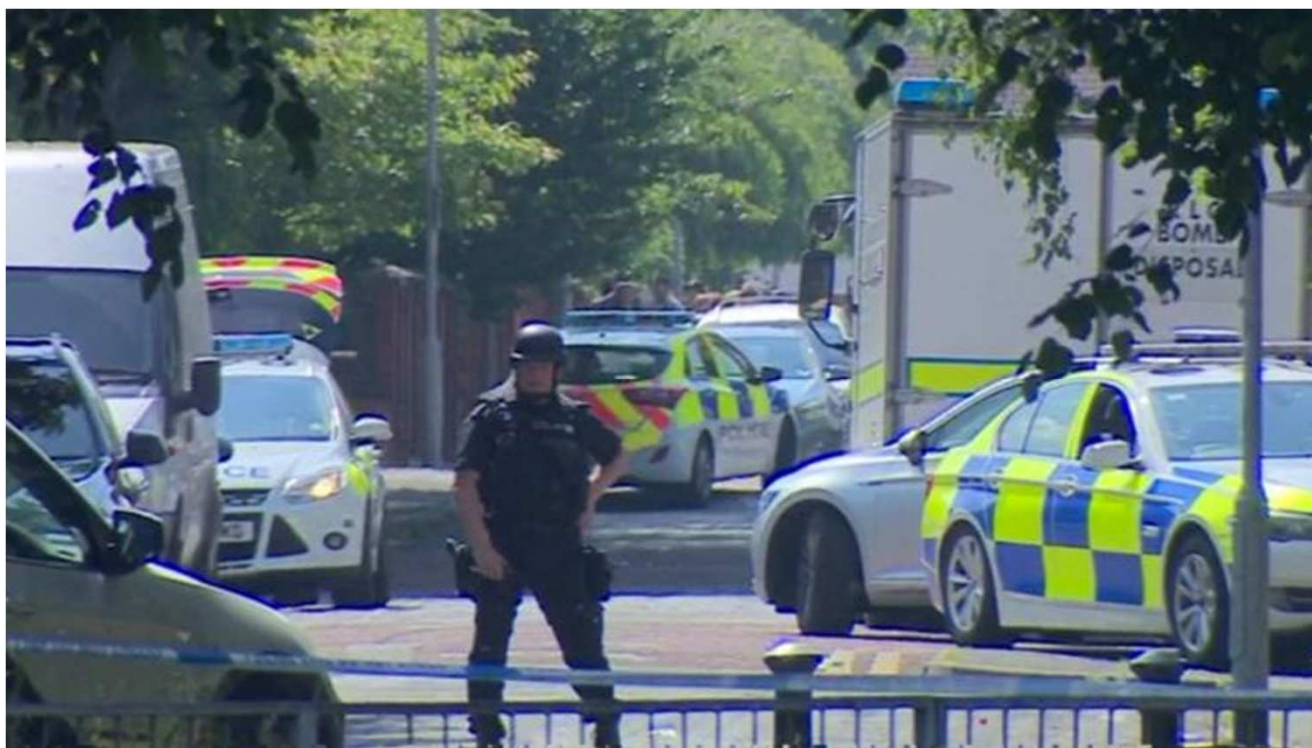
- An event or situation which threatens serious damage to **human welfare** in a place in the UK, the **environment** of a place in the UK, or war or terrorism which threatens serious damage to the **security** of the UK.
- ***This legal definition neatly reflects KCC's role.***



# Kent Community Risk Register 2016

Risk No.	Very High	Page	Risk No.	High	Page	Risk No.	Medium	Page
			50	Outbreak of plant disease	30	29	Infectious Diseases	21
17a	Severe inland flooding	14		Medium		31	Zoonotic notifiable animal diseases	22
18	Local/urban flooding	15	1	Localised fire or explosion at a fuel distribution site	1	33	failure of a critical upstream oil/gas facility	23
28	Influenza-type disease (Pandemic)	21	2	Onshore fuel pipeline Incident	1	34	Industrial action by critical workers	23
Risk No.	High	Page	3	Explosion at a gas pipeline	1	34a	Fire Service industrial action.	24
4	Toxic chemical release	7	3a	Fire or explosion at a gas terminal	1	35a	Strike action by prison officers	24
5	Radioactive substance release	8	6	Accidental release of radioactive material	8	35b	Civil disturbance in a prison	25
10	Major Pollution of Controlled Waters	10	7	Biological substance release (Pathogens)	8	36	Influx of British Nationals from abroad	25
13	Transport of fuel/explosives accident	11	8	Biological substance release	9	40	Incident in Road Tunnel	27
16	Storms & Gales	13	9	Major food contamination incident	9	42	Attacks on Critical Infrastructure	28
17	Local fluvial flooding	13	11	Wildfire	10	43	Major Incident in Complex Built Environments	28
21	Low Temperatures & Heavy Snow	16	12	Maritime accident and blockade of a port	11	45	Railway incident – Channel Tunnel	28
22	Heat wave	17	14	Road or rail tanker incident	12	47	Major Shipping Incident	29
24	Major coastal and tidal flooding	19	15	Aviation accident	12	<div style="background-color: #008000; color: white; text-align: center; padding: 10px;"> <p>Low</p> <p>Currently No Low Risks</p> </div>		
32	Constraint on the supply of fuel	23	19	Extremely hazardous flash flooding	15			
37	Failure of water infrastructure	25	20	Major reservoir dam failure/collapse	16			
38	Loss of telecommunications	26	23	Drought	18			
39	Failure of electricity network	26	25	Land movement	20			
41	Attacks on Crowded Places	27	26	Building collapse	20			
44	Major incident at a large scale event	28	27	Bridge collapse	20			

# Current Threat and Risk





# Contest Strategy

## Prevent

### *Safeguarding vulnerable people from radicalisation & extremism*

- Respond to the ideological challenge of terrorism
- Support vulnerable people and prevent people from being drawn into terrorism
- Work with key sectors and institutions to address the risks

# Contest Strategy

## Prepare

*Mitigates the impact of a terrorist attack that cannot be stopped*

- Dynamic risk assessment at senior level
- Vigilant and alert staff
- Robust security regimes (physical and information)
- Share information with partners
- Continuity of service delivery
- Maintain public confidence



# Kent County Council Roles and Responsibilities

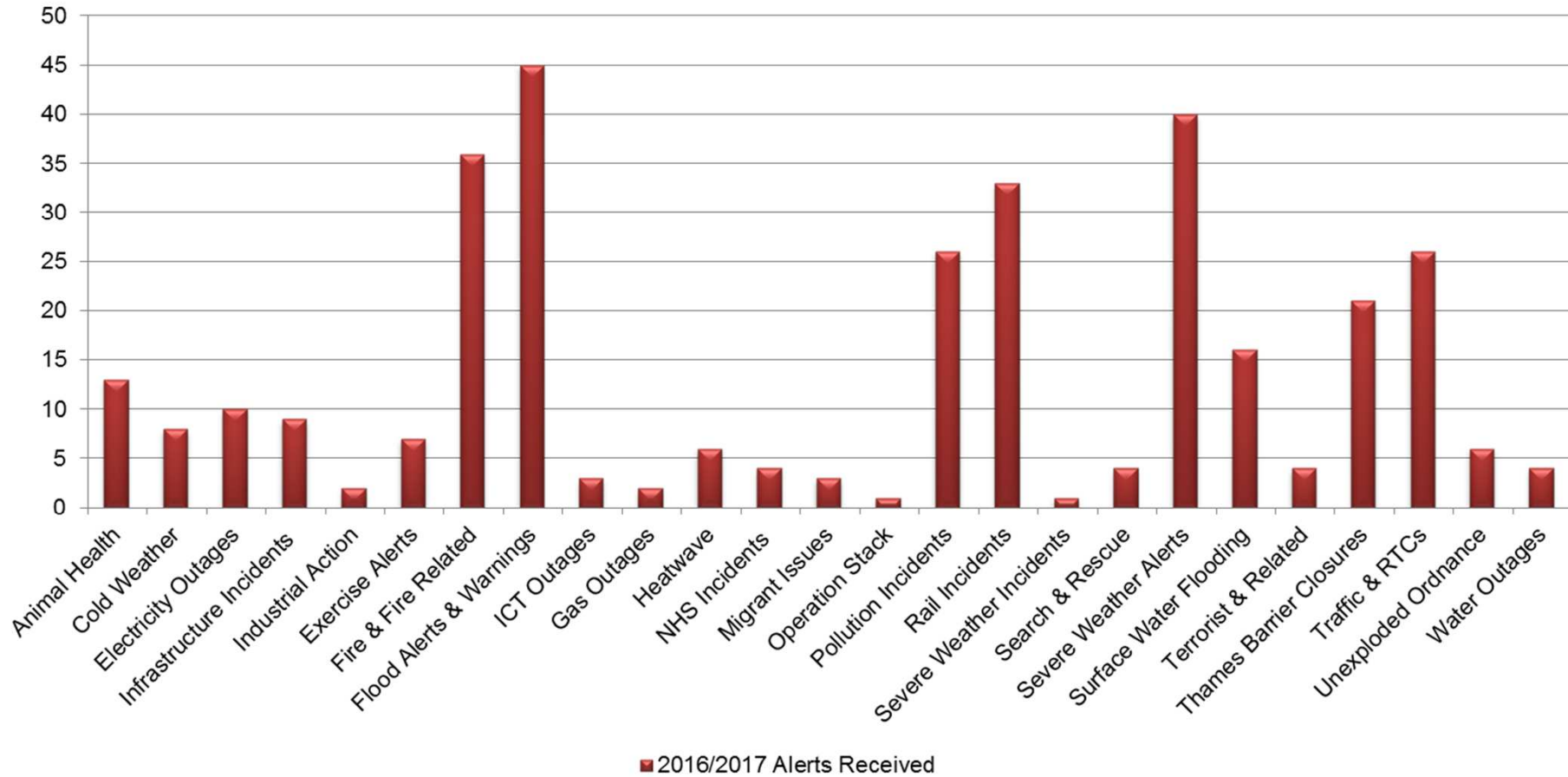
# KCC Roles and Responsibilities

- Support the Emergency Services
- Establishment of and transport to Welfare Centres for displaced people
- Provide support services for the community and others affected by the emergency
- Assist in the identification of vulnerable members of the community
- Role of the Highway Authority in keeping routes open
- Establishing mutual aid arrangements
- Establish Temporary Mortuaries on instruction of HM Coroner
- **Lead role in recovering from an emergency**
- Maintain statutory services at an appropriate level
- Public warning and informing
- The co-ordination and lead on several key contingency plans

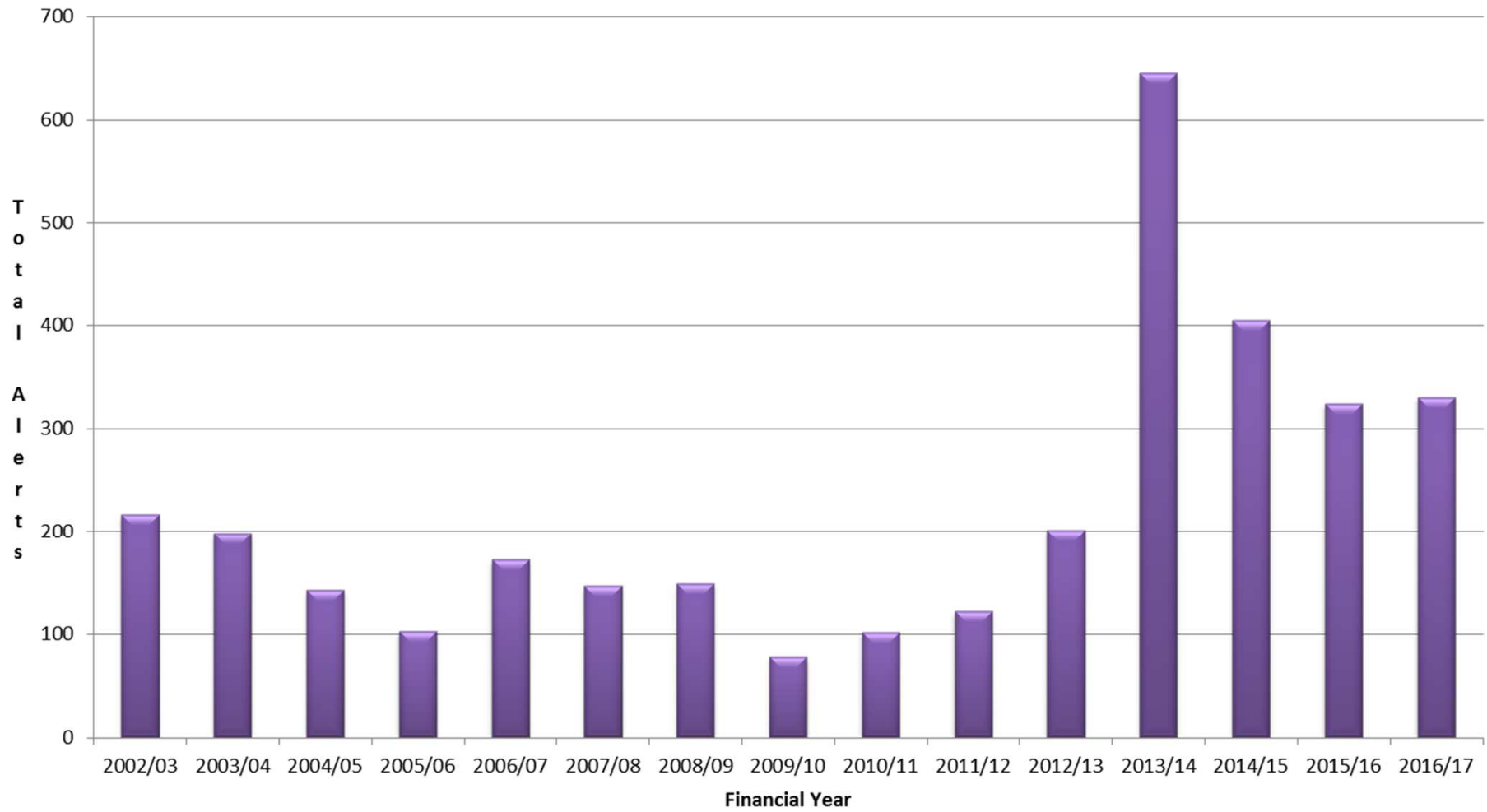
# Resilience and Emergency Planning Service

- Professional subject matter experts
- Provides 24/7 Duty Emergency Planning Officer Function for KCC
- Maintains the County Emergency Centre
- Develops and maintains Emergency Plans and Business Continuity Plans
- Liaises with and advises Corporate Duty Director, Tactical Duty Director and Emergency Response Team
- Provides KCC with a programme of training and exercises
- Engages all parts of KCC in resilience matters
- Engages KRF partners (including voluntary sector) and communities in resilience matters
- Ensures that KCC is represented in KRF groups

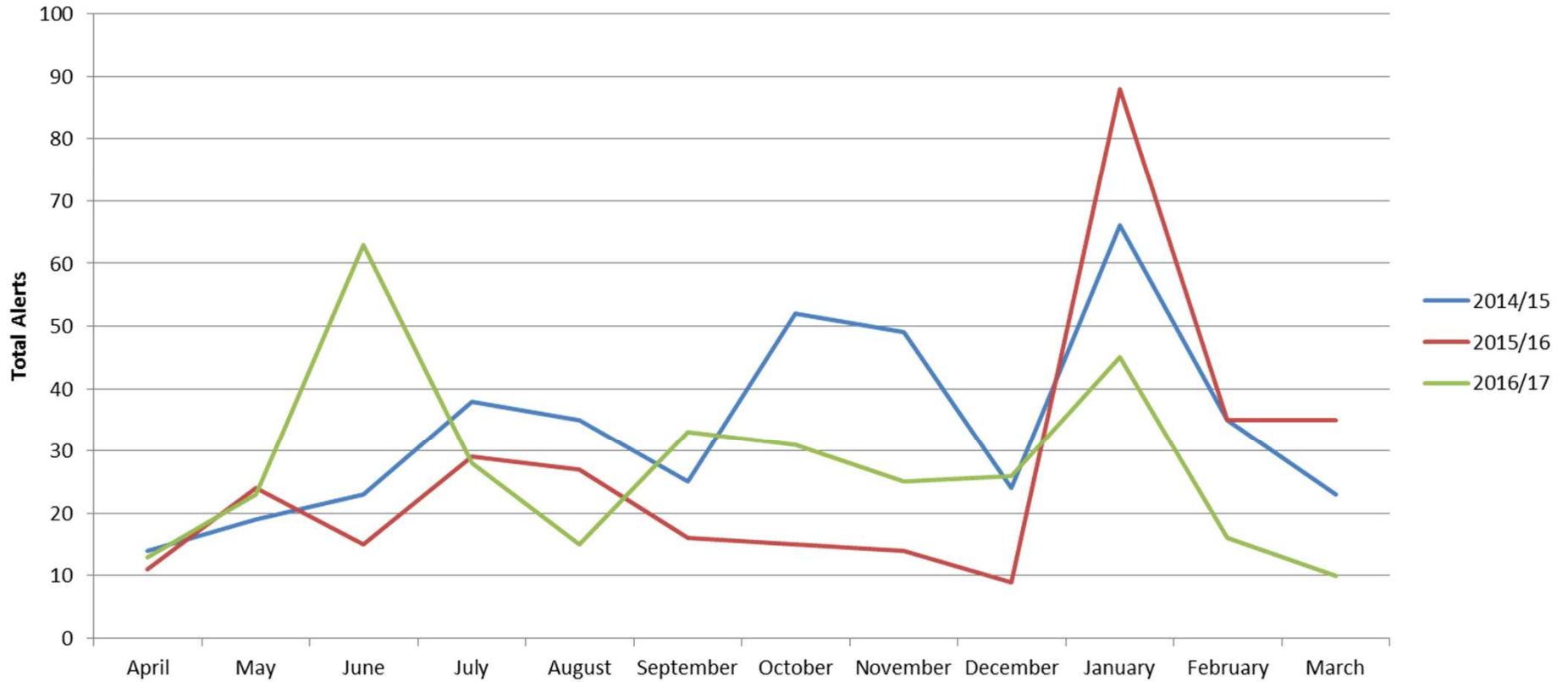
## Analysis of Alerts Received by Duty Emergency Planning Officer by Category 2016/17



## Total Alerts to Duty Emergency Planning Officer by Financial Year

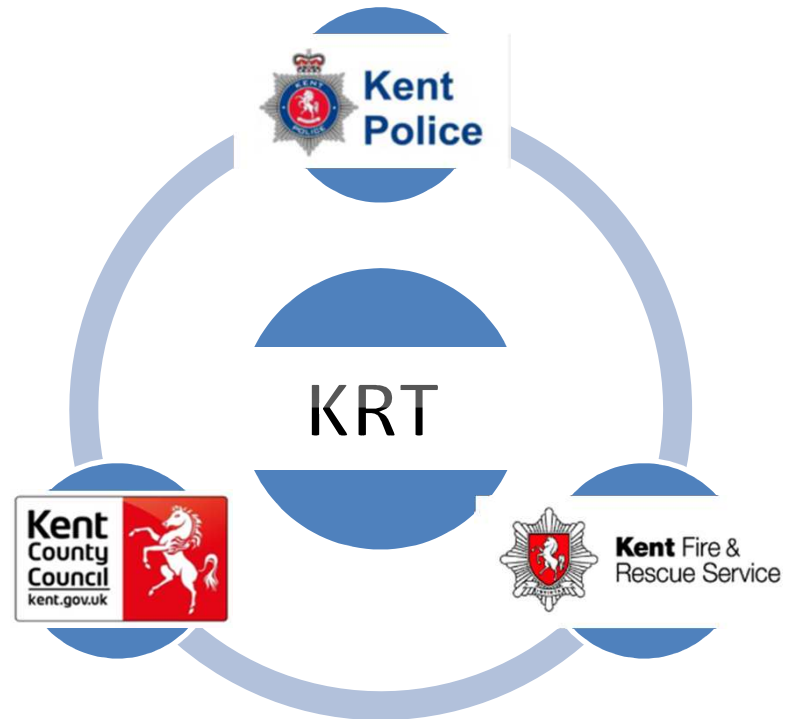


### Duty Emergency Planning Officer Alerts by Month (3 year comparison)





# Kent Resilience Team



**Kent Prepared**

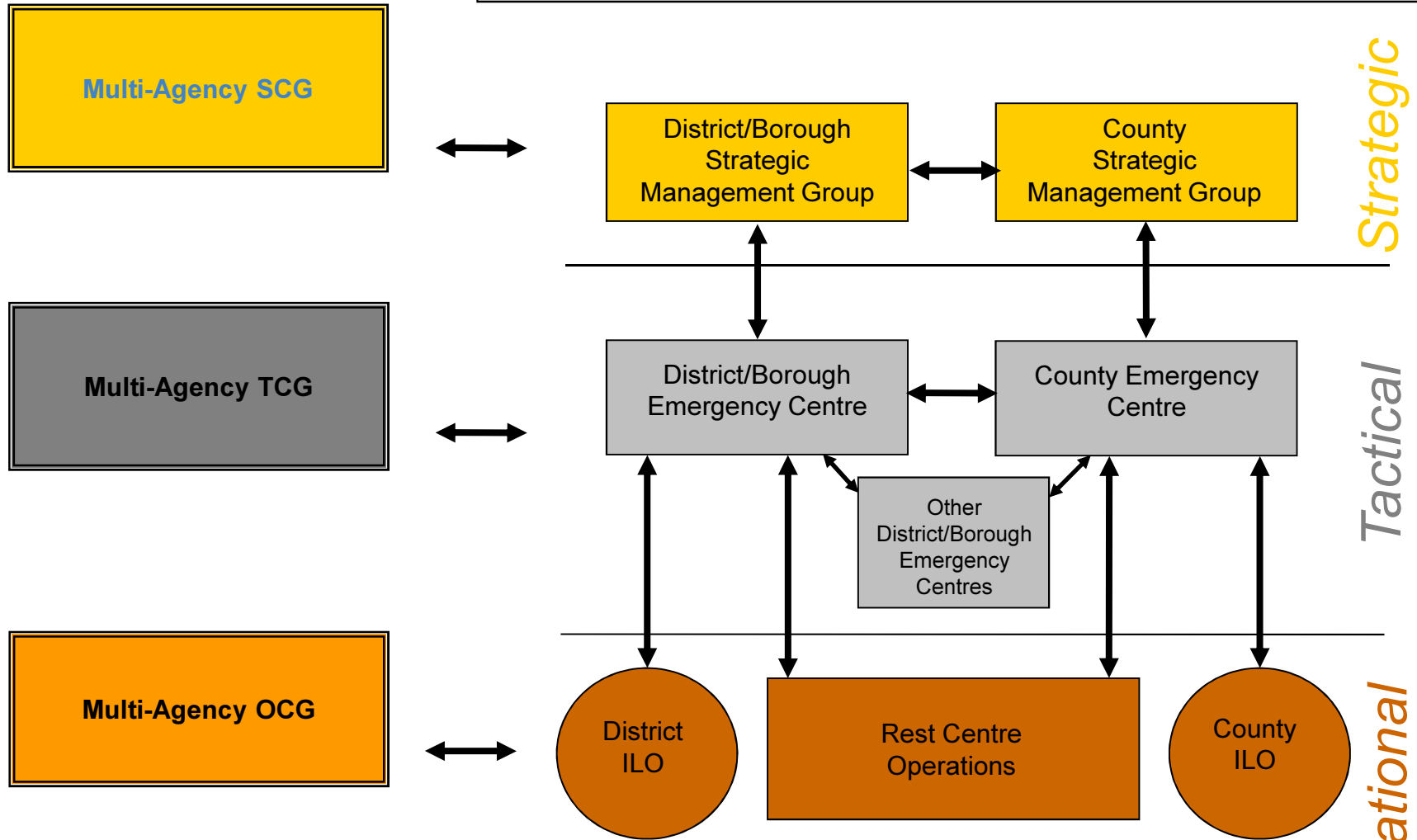


# Kent Resilience Team

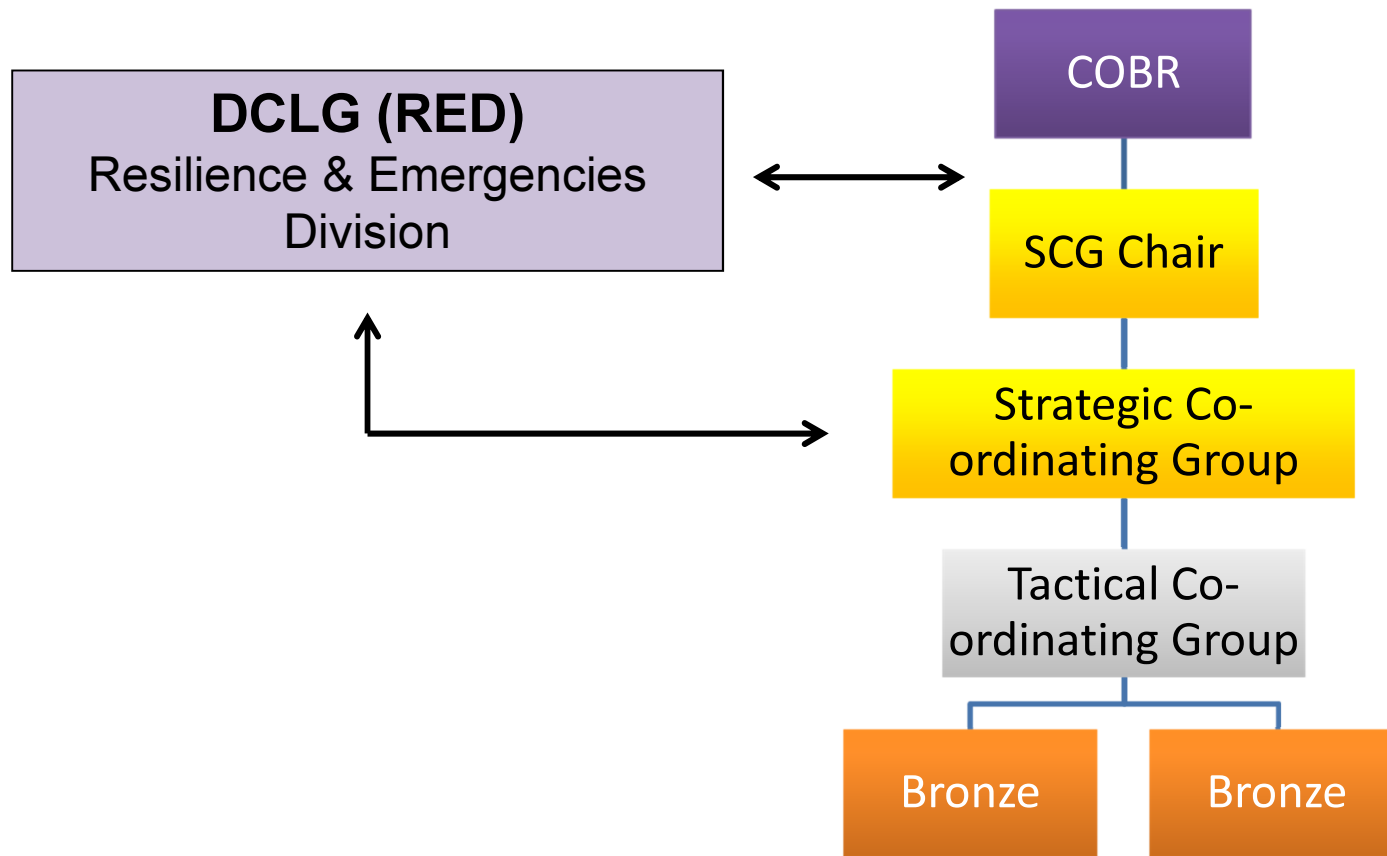
## Public Protection Service

- Tri-party Management Team
- KRT Shared Service Level Agreement
- KRF Partnership Agreement
- Multi-agency planning activities
- KRF Business Plan & Activity Calendar
  - Communications plan
  - Training Plan
  - Exercise Plan
  - KRF engagement

# Local and Multi-Agency Command and Control



# Relationship Between Central and Local Response



# Principles for joint working

## Principles for Joint Working

Co-location

Communication

Coordination

Joint Understanding of Risk

Shared Situational Awareness

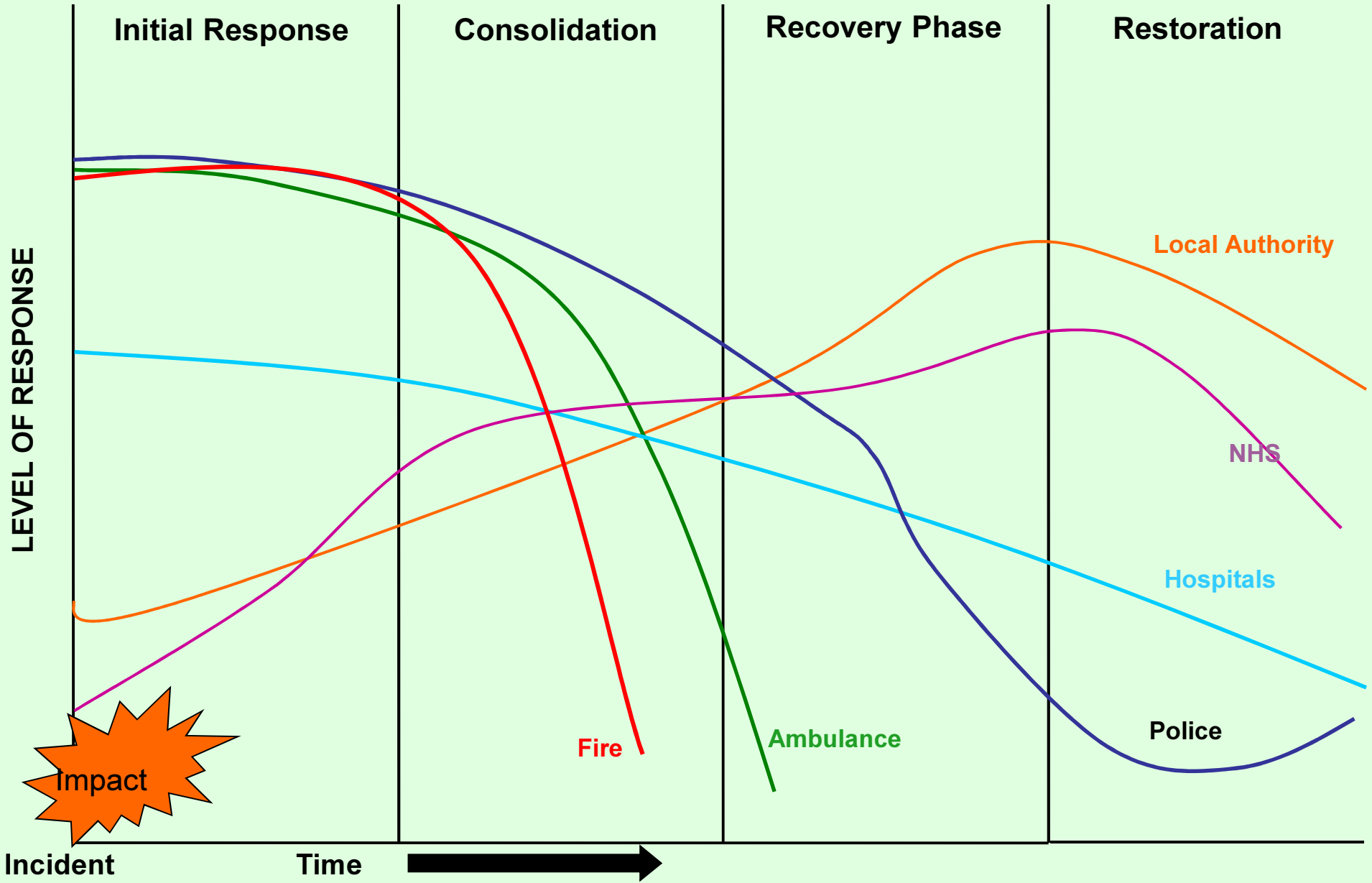
# JESIP Joint Decision Making Model



Joint Emergency Services Interoperability Programme (JESIP) Doctrine (2013)



# Stages of Emergency Response





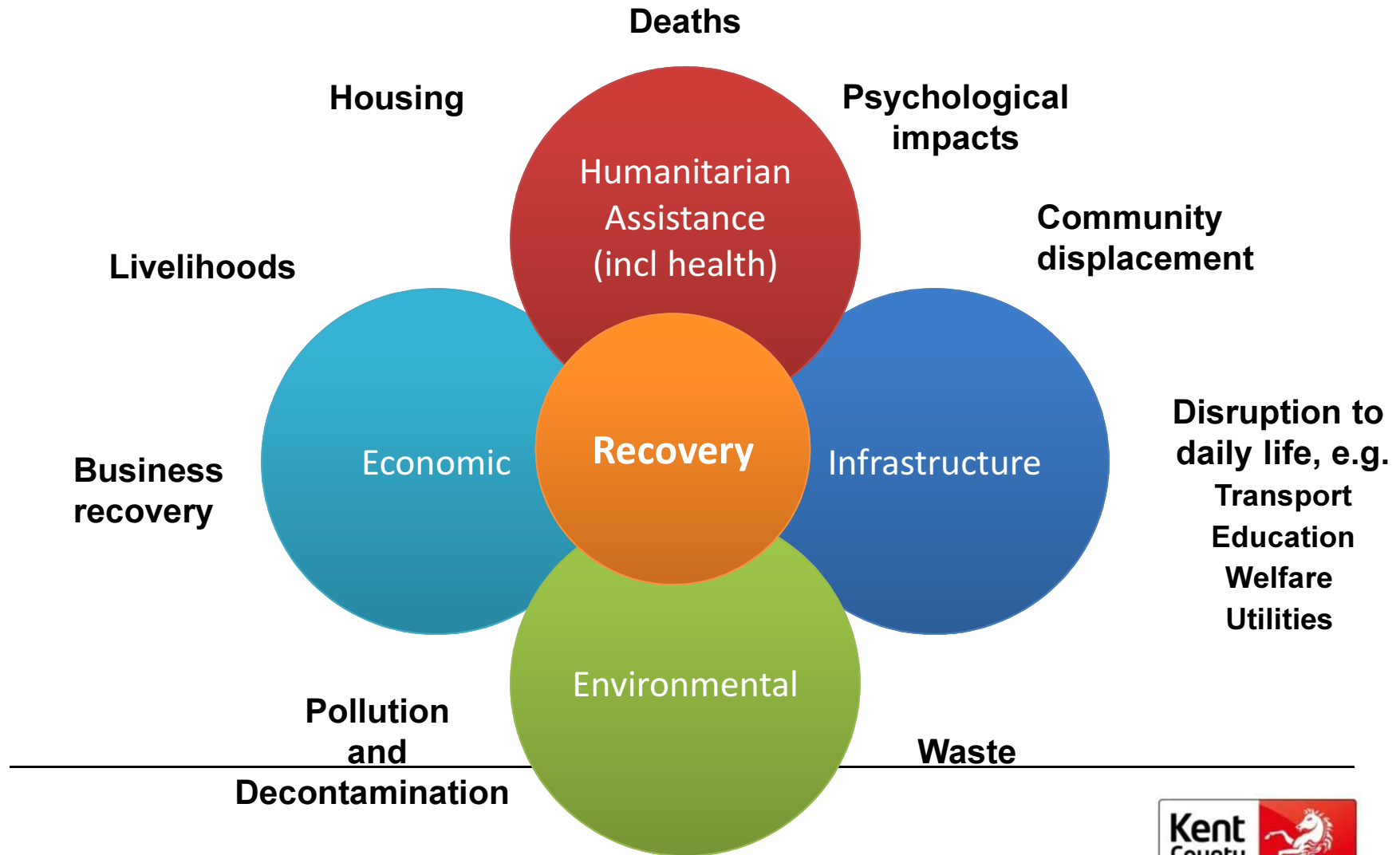
# Recovery



# Recovery Co-ordinating Group (RCG)

- A KCC responsibility for Major Emergencies
- Recovery Co-ordinating Group should be set up early into a response
- Wide area & catastrophic incidents may require co-ordination at the national level
  - Ensure that longer-term recovery priorities are reflected in planning & execution of the response
  - Ensure that relevant organisations in public, private & voluntary sectors are engaged from an early stage
  - Ensure continuity of management of the emergency

# Components of Recovery



# Visible Leadership

- *“...the Review notes the value of a high media profile for local leaders, as achieved by Council Leaders and Gold Commanders in a number of areas affected by the floods ... using the media as a way of communicating advice to the public and providing visible leadership at a local level”.*

*Learning lessons from the 2007 floods: Interim Report of the Review  
by Sir Michael Pitt (former KCC Chief Executive)  
See Ch.7, ‘Engaging the public’*



A local newspaper floats in flood waters at Otney Island near Oxford © Getty Images

# Kent County Council Resilience and Emergency Planning Service



## Questions

# Contact Details

**Fiona Gaffney – Head of Resilience and Emergency Planning Service**

[resilience@kent.gov.uk](mailto:resilience@kent.gov.uk)

[Fiona.gaffney@kent.gov.uk](mailto:Fiona.gaffney@kent.gov.uk)

**Tel. 03000 419465**

This page is intentionally left blank